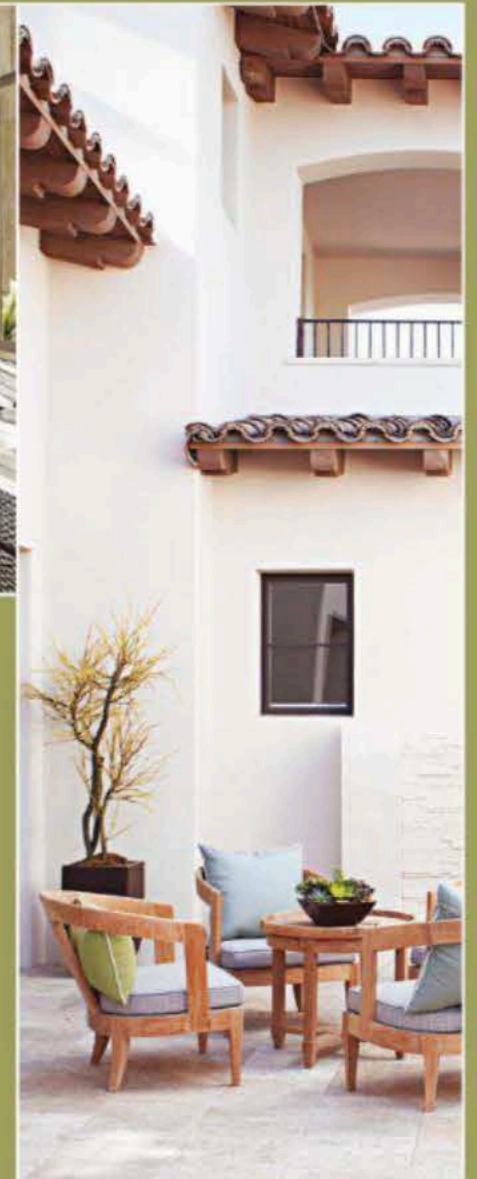


# Modern Refinement



Unusual materials and simplified lines allow these homes to strike a contemporary note that's rich in character.





# Sunny Disposition

A California home happily melds traditional and modern elements via textures and colors that bring the outside in — and vice versa.

WRITTEN BY KEN VYSOCKY  
PHOTOGRAPHY BY EDMUND BARR  
STYLED BY ROBIN TUCKER  
PRODUCED BY ANDREA CAUGHEY



Nailhead-studded chairs, oil-rubbed bronze sconces, and a mirror with a hammered-metal frame add subtle texture to Cecilia and Joe Hirko's dining room. "The table has a live edge, which is a sophisticated way to bring something organic into the room," interior designer Kathleen DiPaolo says.



THIS PHOTO: The great-room's 16-foot-tall ceiling contributes to the home's airy feel. To make the space intimate, DiPaolo used layers of lighting fixtures—recessed cans, pendants, chandeliers, and table lamps—to bring the eye down. OPPOSITE: Stucco, stone, and clay roof tiles lend the Hirkos' home a classic Mediterranean vibe that meets neighborhood style requirements, while forms are kept streamlined to strike a modern note.



When avid golfers Cecilia and Joe Hirko decided to leave behind the oft-gloomy skies of Portland and build a vacation home in a golf-course community in La Quinta, California, they had one edict for architect Anton Marinkovich and interior designer Kathleen DiPaolo: Let in the light—every possible ray of it.

The result is a 5,400-square-foot home that's anything but par for the course, with a Mediterranean-style exterior that belies a surprisingly sleek, airy, and modern interior. Buoyed by large pocket sliding-glass doors along its rear, the light-drenched home heartily embraces year-round sunshine, a pool, the golf course, and the nearby Santa Rosa mountains. "We wanted a more relaxed atmosphere than our former house," Cecilia says. "So there's no heavy, dark wood like you'd typically find in a Mediterranean home. We really wanted to bring the outdoors inside."

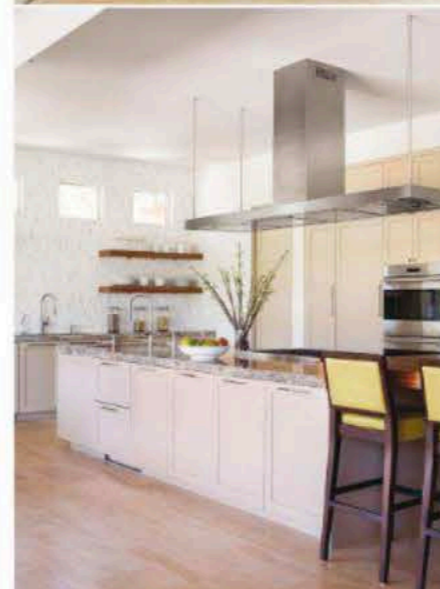
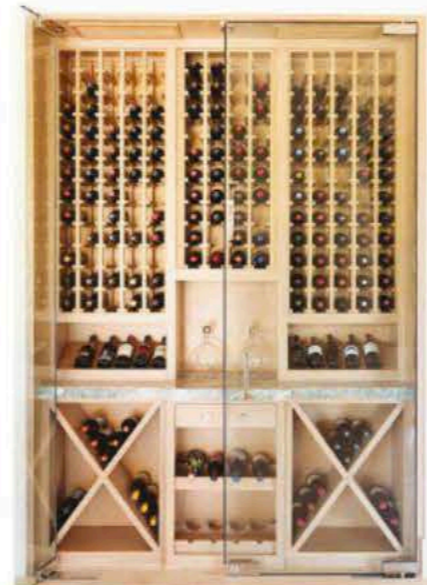
DiPaolo selected a muted, earth-tone color palette drawn from the desert's many subtle hues to do just that. "The design goal was a sense of calm and serenity," DiPaolo says. "We wanted everything to look light, bright, and fresh."

Like a happily married couple that brings out the best in each other, the warm beiges and soft grays that DiPaolo selected for fabrics and rugs complement an array of rich architectural materials. In the great-room, engineered wood ceiling beams crown earth-tone travertine-tile floors, while reclaimed wood sashays up wall niches. Richly patterned concrete tiles sweep throughout the master bath, partnering with sheets of mirror and walls of glass to virtually erase the lines between inside and out. Throughout, oil-rubbed bronze window trim, sans casings, creates strong, linear lines that foster a sleek, modern feel.

More glass and steel handrails painted to match window frames turn steps to the upper level into a contemporary vision, while glass light fixtures punctuate rooms yet let the eye travel outside to enticing views of green fairways. "I like to repeat elements in different ways," DiPaolo says. "It pulls things together, like a bow on a present." The result? A casual, fuss-free ambience that suits the owners to a tee.

RESOURCES BEGIN ON PAGE 138.





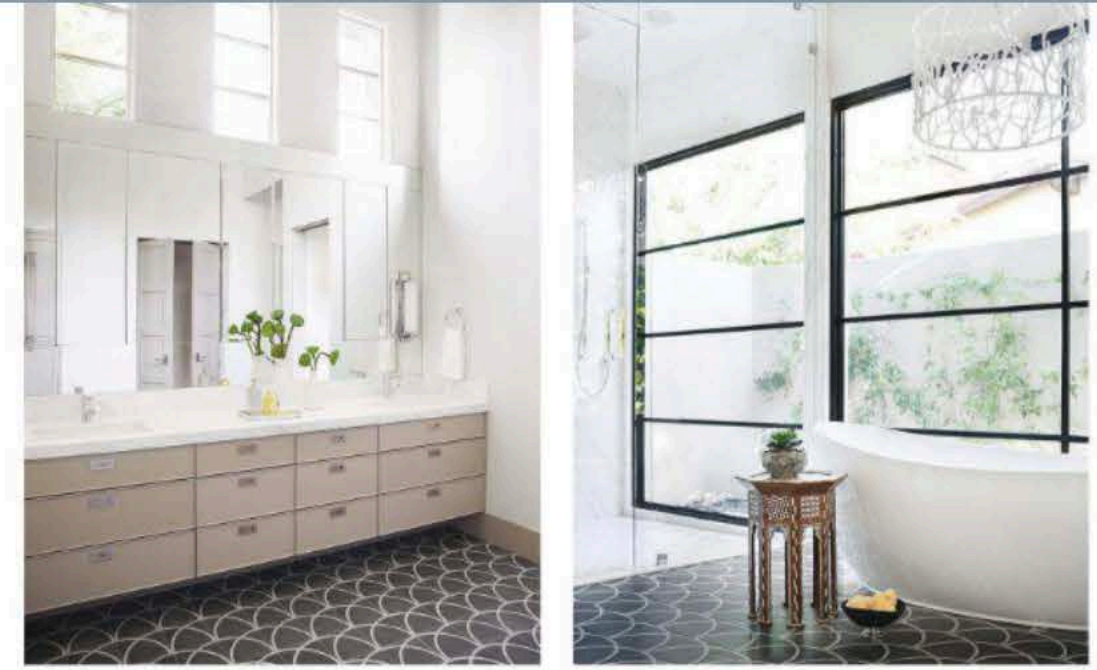
OPPOSITE: Reclaimed lowa barn wood lends textural panache to the loggia. CLOCKWISE, FROM TOP LEFT: A glass-front wine closet made from white oak doubles as sculpture in the kitchen. A low retaining wall defines the pool while keeping the view to the golf course open. A baby soffit in the breakfast room hides rolling shades. Tumbled travertine tiles surround the pool. The front door is accessed via floating steps set within a private courtyard. Glass railings allow for an unobstructed view of a split-face travertine-clad wall in the dining room. An 8-foot-long stainless-steel hood and a 13-foot-long island anchor the kitchen.







THIS PHOTO: Taking cues from the nearby mountains, DiPaolo opted for a neutral gray palette in the master bedroom, but she added modern verve by combining shiny pillow fabrics with Moroccan nesting tables. RIGHT: Portuguese concrete tiles provide a visual flourish in the master bath. FAR RIGHT: Minimal window trim and frameless glass shower walls allow light to flood the master bath.



*Floor plan*

TOTAL SQ. FT: 5,400  
 BEDROOMS: 3  
 BATHROOMS: 4 full, 2 half



Floor plan © Stracts, Inc.